

SITE DATA		
LOT AREA	174,240	SQ. FT.
	4.0000	ACRES
PARKING PROVIDED		
STANDARDS	17	
ACCESSIBLE	1	
TOTAL	18	

BUILDING AREA TABULATIONS (Square Feet)			
BUILDING	SELF STORAGE	OFFICE	TOTAL
BUILDING 'A'			9,300
1ST FLOOR	6,300	1200	
2ND FLOOR RESIDENCE	1,800		
BUILDING 'B'			18,023
1ST FLOOR	18,023		
BUILDING 'C'			20870
1ST FLOOR	20,870		
BUILDING 'D'			15520
1ST FLOOR	15,520		
BUILDING 'E'			7780
1ST FLOOR	7,780		
TOTAL GROSS AREA:			71,493
TOTAL FOOTPRINT AREA @ 40%:			69,693
EST.NET STORAGE AREA	60,769		

BASIS OF DESIGN		
	REQUIRED	PROVIDED
ZONE	C-1	
STRUCTURE HEIGHT	35 FT. ABOVE NATURAL GRADE	
FLOOR AREA RATIO	NA	NA
LOT COVERAGE (EXCLUDES LOADING AREAS, RECESSED ENTRANCES AND COURTYARD)	40% MAX (69,696 S.F.)	69,693
SETBACKS :		
FRONT	10 FT.	10 FT. / 15 FT.
INTERIOR SIDE	0 FT.	0 FT.
STREET SIDE	10 FT.	10 FT. / 15 FT.
INTERIOR REAR	0 FT.	0 FT.
INTERIOR LANDSCAPING	5 FT. AT DEDICATED ROW	18,120 SF.
OFFICE PARKING SPACES	1 SPACE PER 300 SF OF OFFICE	6 SPACES
PARKING SIZE	9' X 20'	9' X 20'

BUILDING CONSTRUCTION TYPE: IIB
OCCUPANCY CLASSIFICATION: S-1.
BUILDINGS ARE EQUIPPED WITH AUTOMATIC FIRE SPRINKLER SYSTEM IN ACCORDANCE WITH NFPA 13.

STATEMENT OF OPERATION

PROFESSIONAL MANAGEMENT PERSONNEL WILL BE ON SITE DURING REGULAR BUSINESS HOURS. OFFICE HOURS ARE TENTATIVELY SCHEDULED FROM 9:00 A.M. TO 6:00 P.M. MONDAY THROUGH FRIDAY AND 10:00 A.M. TO 4:00 P.M. SATURDAYS AND SUNDAYS. THE SECURITY GATE ACCESS FOR ESTABLISHED SELF STORAGE CUSTOMERS WITH CURRENT ACCOUNT STATUS WILL BE FROM 6:00 A.M. TO 9:00 P.M., 7 DAYS-A-WEEK.

SEVICES PROPOSED

TO PROVIDE SERVICES FOR SELF STORAGE INCLUDES LEASABLE STORAGE SPACE AND SALES OF ITEMS FOR STORAGE. REQUIRED EMPLOYEES TWO STAFF MEMBERS DURING DAY TIMES HOURS, SECURITY SYSTEM WILL BE IN PLACE DURING EVENING HOURS.

FIRE

MONITORED FIRE SPRINKLER SYSTEM(S) ARE REQUIRED FOR THE PROPOSED BUILDING. PLANS SHALL BE SUBMITTED PRIOR TO CONSTRUCTION. INTERIOR/EXTERIOR FIRE DEPARTMENT ACCESS ROADWAY/FIRE LANES SHALL BE REQUIRED PER FIRE DEPARTMENT STANDARD. FIRE DEPARTMENT ACCESS ROADWAYS PROVIDING ACCESS TO THE BUILDINGS IN THIS PROJECT SHALL BE A MINIMUM OF 26 FEET WIDE. IF GATES INSTALLED, MUST COMPLY WITH FIRE DEPARTMENT STANDARDS. PROVIDE A PRELIMINARY ON-SITE FIRE PROTECTION PLAN WHICH INDICATES THE LOCATION OF ALL REQUIRED FIRE PROTECTION APPLIANCES (FDC'S, PIV'S, RP'S, HYDRANTS, ETC.) REQUIRED APPLIANCES SHALL BE UNOBSTRUCTED BY FENCING, STORAGE CONTAINERS, PARKED VEHICLES, ETC. AN APPROVED WATER SUPPLY SYSTEM, COMPLETE WITH STREET FIRE HYDRANTS COMPLYING WITH FIRE DEPARTMENT STANDARDS, SHALL BE IN PLACE PRIOR TO ANY COMBUSTIBLE CONSTRUCTION. KNOX BOX/KEY BOX IS REQUIRED, AND SHALL BE PROVIDED AND INSTALLED IN ACCORDANCE WITH FIRE DEPARTMENT STANDARDS. ACCESS GATES SHALL BE PROVIDED WITH AN "OPTICOM" RECEIVER CAPABLE OF OPENING GATES VIA DECODING OF THE "OPTICOM" STROBE SIGNAL TRANSMITTED BY FIRE, POLICE, AND AMBULANCE UNIT. ALL ACCESS GATES SHALE REQUIRED MECHANICAL MEANS FOR OPENING IN EVENT OF POWER FAILURE, SHALL NOT IMPINGE ON REQUIRED CLEAR WIDTH WHEN FULLY OPEN, AND SHALL BE EQUIPPED WITH KNOW BOX LOCK ACTUATION DEVICES.

SHEET INDEX

ARCHITECTURAL

A1.0 COVER SHEET & SITE PLAN
A1.1 LANDSCAPE PLAN
A1.2 ROOF PLAN
A2.0 FLOOR PLAN - BUILDING A
A2.1 FLOOR PLAN - BUILDING B & C
A3.0 ELEVATIONS - BUILDING A
A3.1 ELEVATIONS - BUILDING A
A3.2 ELEVATIONS - BUILDING A
A3.3 ELEVATIONS - BUILDING B
A3.4 ELEVATIONS - BUILDING C
A4.0 ELEVATIONS - COLOR
A4.1 ELEVATIONS - COLOR
COLOR BOARD

NOTE

1. ALL NEW SIGNAGE AND FREESTANDING SIGNAGE SHALL COMPLY WITH TITLE 16 STANDARDS. (DEVELOPMENT CODE SECTION 16-3.22.140 - TABLE 22.4)

2. UTILITY EQUIPMENT SHALL BE SCREENED FROM PUBLIC VIEW VIA LOCATION WITHIN ARCHITECTURALLY INTEGRATED STRUCTURE, UTILITY ROOM, OR LANDSCAPING AND PLACEMENT SUFFICIENT TO SCREEN SUCH EQUIPMENT. (INDUSTRIAL DESIGN GUIDELINES, SECTION 16-3.10.060 (d)(1)).

3. UNDERGROUNDING OF UTILITIES AND STREET IMPROVEMENTS ARE REQUIRED IN CONJUNCTION WITH ANY NEW DEVELOPMENT. (DEVELOPMENT CODE, SECTION 16-5.12.170 & MUNICIPAL CODE, SECTION 9.32.040).

BUILDING A - FULLY SPRINKLERED
BUILDING B - FULLY SPRINKLERED
BUILDING C - FULLY SPRINKLERED

DIRECTORY

OWNER
OHANA ALLIANCE GROUP, INC.
9105 BRUCEVILLE RD., SUITE 6A
ELK GROVE, CA 95758
TELEPHONE: (916) 743-1145
CONTACT: BILLY PHONG
EMAIL: billyphong@gmail.com

ARCHITECT
BRUCE JORDAN ARCHITECT
131 CALLE IGLESIA, SUITE 100,
SAN CLEMENTE, CA 92673
TELEPHONE: (949) 388-8090
FACSIMILE: (949) 388-8290
CONTACT: David Meinecke
E-MAIL: dmeinecke@jordanarchitects.com

AMETHYST DRIVE SELF-STORAGE

VICTORVILLE, CA

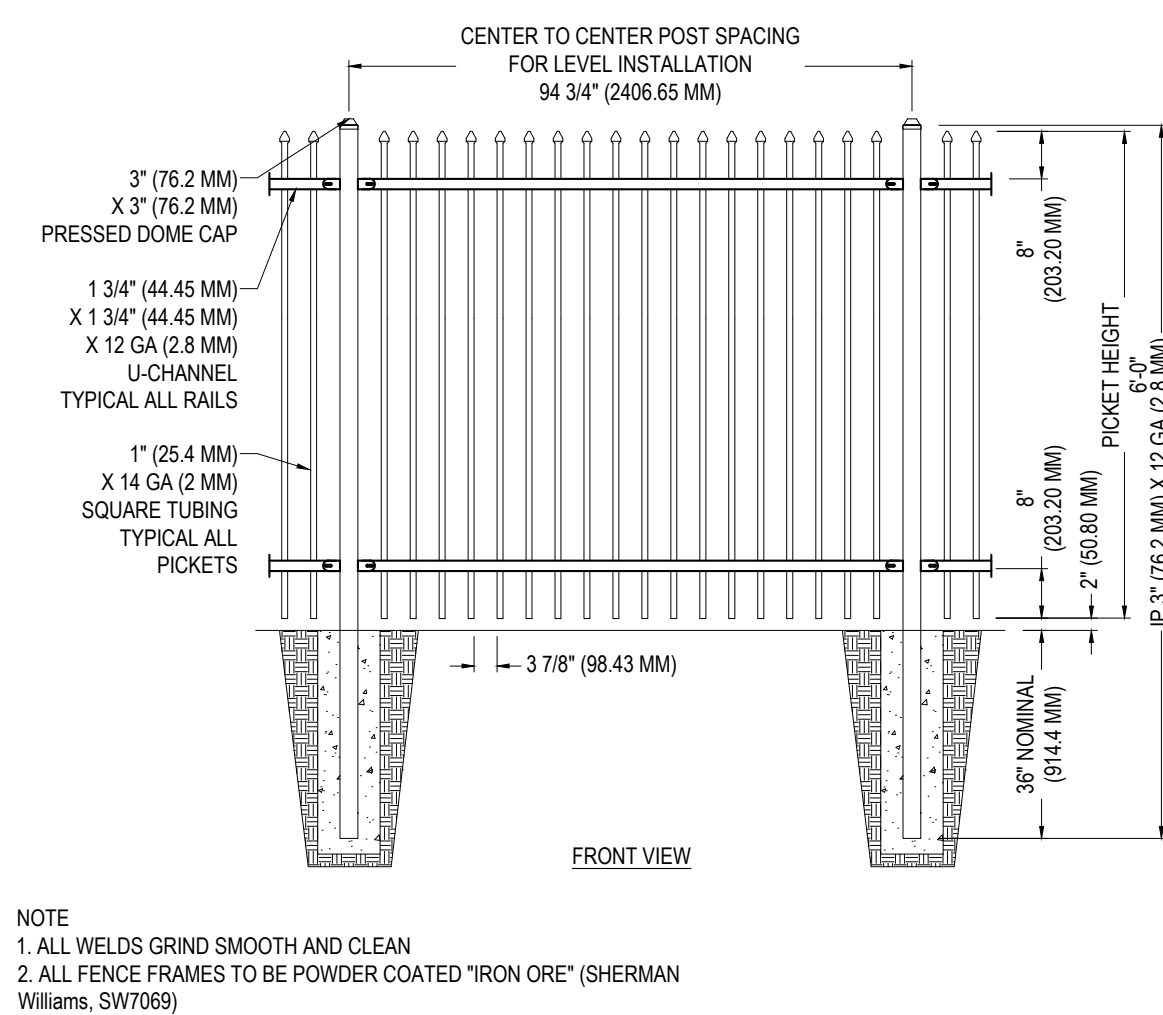
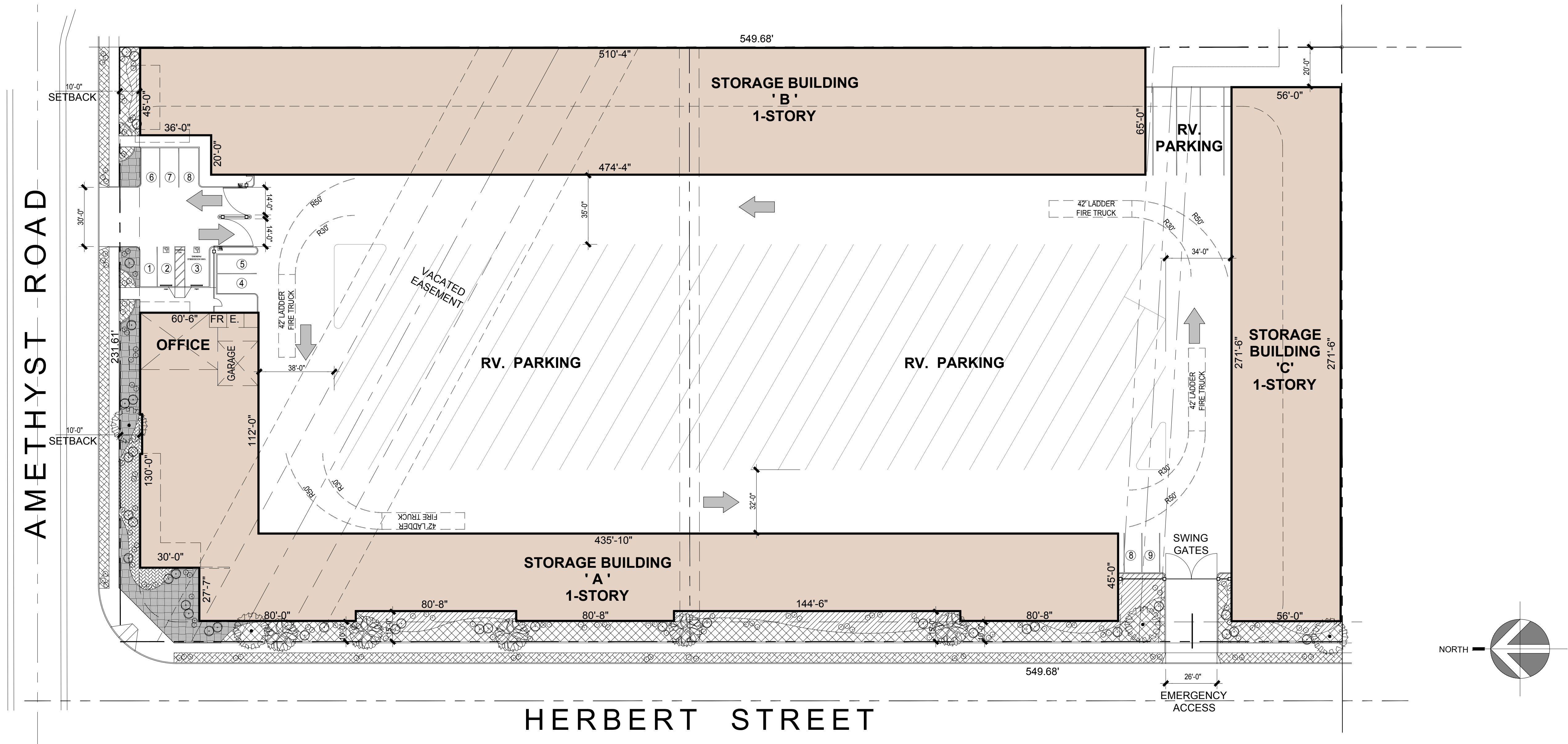
SCHEME 'D' A1.0

SITE PLAN

THIS DRAWING AND ITS CONTENTS ARE INSTRUMENTS OF SERVICE AND ARE THE COPYRIGHTED PROPERTY OF JORDAN ARCHITECTS, INC. THE USE IS EXPRESSLY INTENDED FOR THE PROJECT NOTED ABOVE AND MAY NOT BE REUSED OR REPRODUCED IN WHOLE OR IN PART WITHOUT THE WRITTEN PERMISSION OF JORDAN ARCHITECTS, INC. "COPYRIGHT" YEAR OF FIRST PUBLICATION 2020 JORDAN ARCHITECTS, INC.

JOB NUMBER: 20-319
SCALE: 1"=30'-0"
DATE: 07/14/2020

JORDAN
ARCHITECTS
131 CALLE IGLESIA, SUITE 100
SAN CLEMENTE, CA 92672
949.388.8090



NOTE
1. ALL WELDS GRIND SMOOTH AND CLEAN
2. ALL FENCE FRAMES TO BE POWDER COATED "IRON ORE" (SHERMAN Williams, SW7069)

FENCE DETAIL

BOTANICAL / COMMON NAME		
PLANT SCHEDULE		
LEGEND	BOTANICAL / COMMON NAME	SIZE
1	PALO BREA (CERCIDIUM PRAECOX)	36 IN. BOX
2	DESERT MUSEUM PALO VERDE PARKINSONIA X	36 IN. BOX
3	ULMUS PARVIFOLIA EVERGREEN ELM	24 IN. BOX
4	CANDELLILA EUPHORBIA ANTISYPHILITICA	18 IN. BOX

GROUND COVER SCHEDULE	
LEGEND	MATERIAL
1	COCOA BROWN DG (DECOMPOSED GRANITE)
2	BUCKSKIN DG (DECOMPOSED GRANITE)
3	BROWN PEA GRAVEL GRAVEL
4	ASPARAGUS DENSIFLORUS 'SPRENGER' ASPARAGUS FEM
5	DALEA GREGGII CREEPING DALEA

AMETHYST DRIVE SELF-STORAGE PRELIMINARY LANDSCAPE

VICTORVILLE, CA

SCHEME 'D' A1.1

THIS DRAWING AND ITS CONTENTS ARE INSTRUMENTS OF SERVICE AND ARE THE COPYRIGHTED PROPERTY OF JORDAN ARCHITECTS, INC. THE USE IS EXPRESSLY INTENDED FOR THE PROJECT NOTED ABOVE AND MAY NOT BE REUSED OR REPRODUCED IN WHOLE OR IN PART WITHOUT THE WRITTEN PERMISSION OF JORDAN ARCHITECTS, INC. "COPYRIGHT" YEAR OF FIRST PUBLICATION 2020 JORDAN ARCHITECTS, INC.

JOB NUMBER: 20-319
SCALE: 1"=30'-0"
DATE: 07/14/2020

JORDAN
ARCHITECTS
 131 CALLE IGLESIA, SUITE 100
 SAN CLEMENTE, CA 92672
 949.388.8090

AMETHYST DRIVE SELF-STORAGE

VICTORVILLE, CA

SCHEME 'D' A1.2

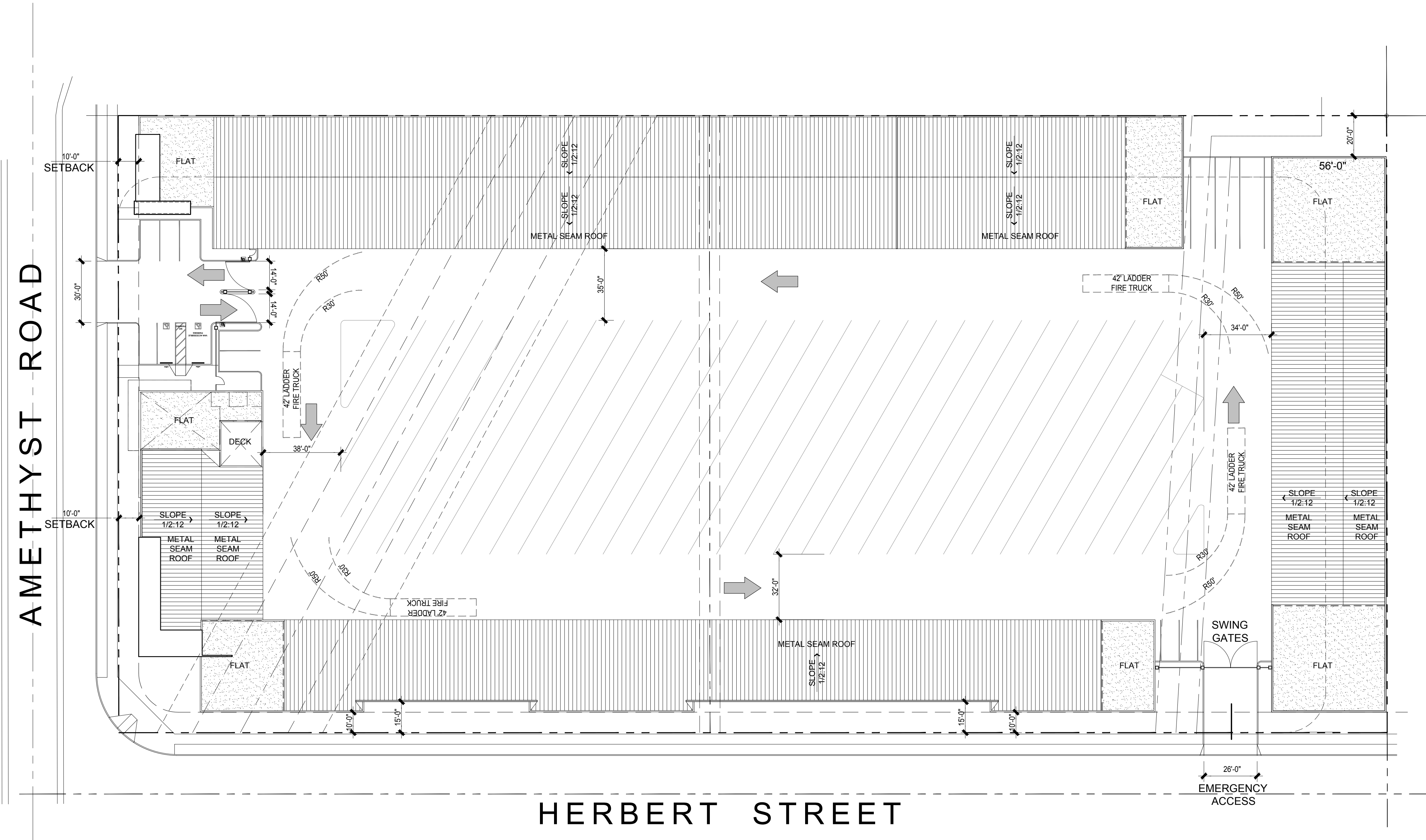
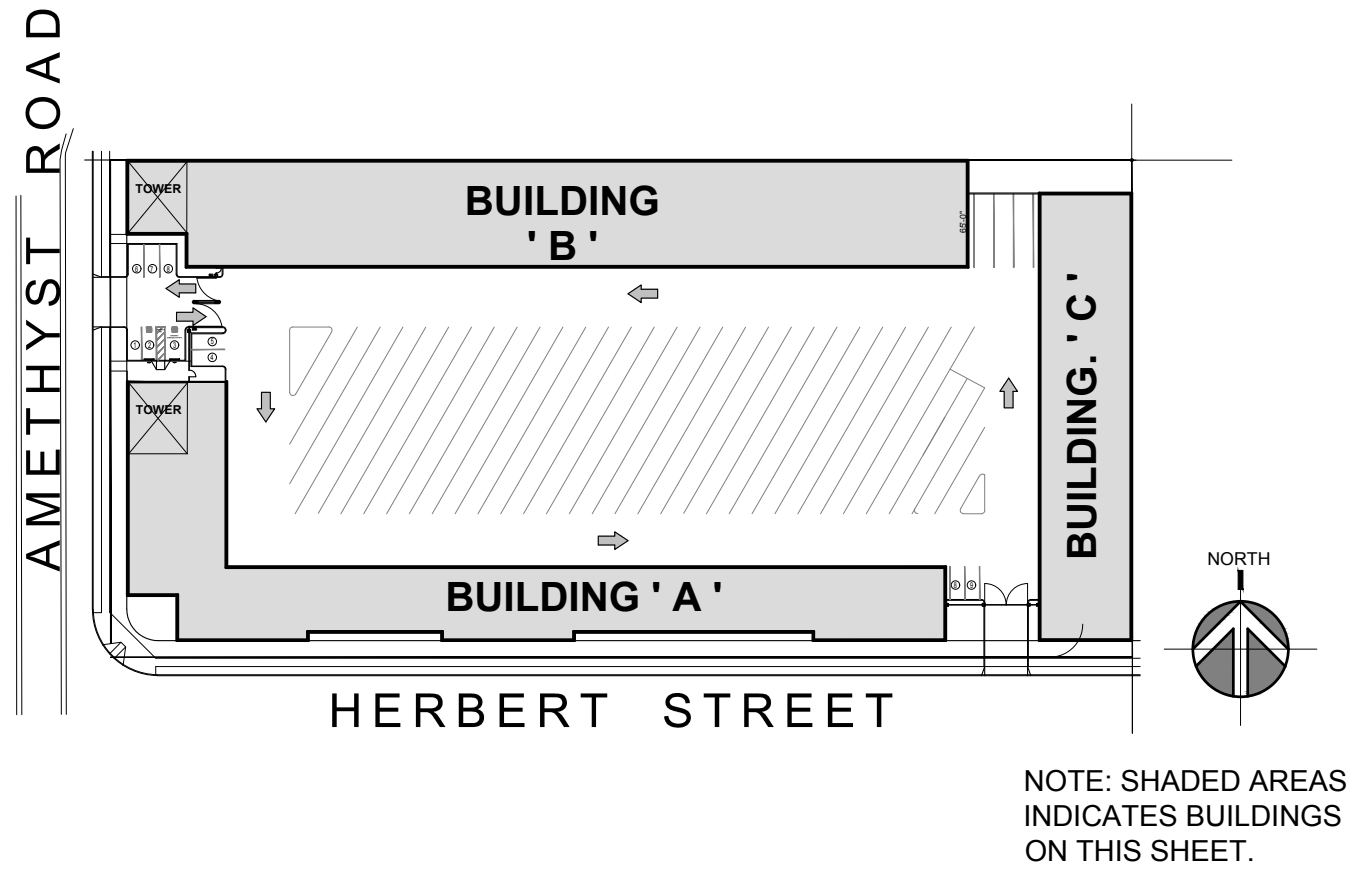
ROOF PLAN

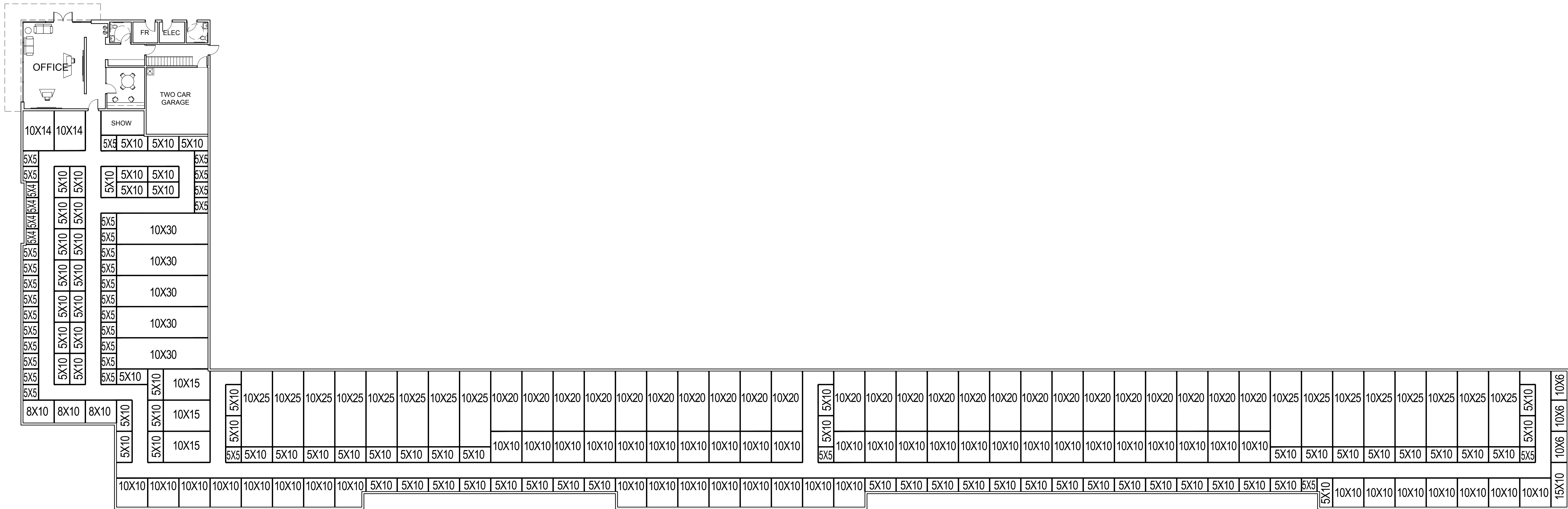
THIS DRAWING AND ITS CONTENTS ARE INSTRUMENTS OF SERVICE AND ARE THE COPYRIGHTED PROPERTY OF JORDAN ARCHITECTS, INC. THE USE IS EXPRESSLY INTENDED FOR THE PROJECT NOTED ABOVE AND MAY NOT BE REUSED OR REPRODUCED IN WHOLE OR IN PART WITHOUT THE WRITTEN PERMISSION OF JORDAN ARCHITECTS, INC. "COPYRIGHT" YEAR OF FIRST PUBLICATION 2020 JORDAN ARCHITECTS, INC.

JOB NUMBER: 20-319
SCALE: 1"=30'-0"
DATE: 07/14/2020

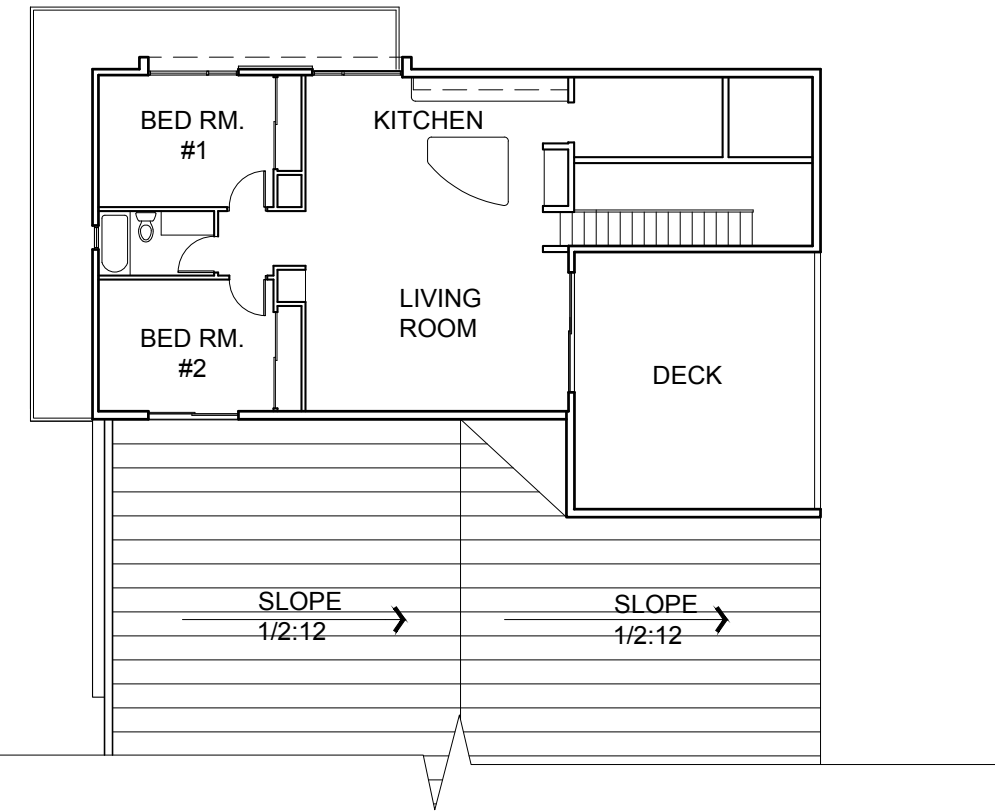
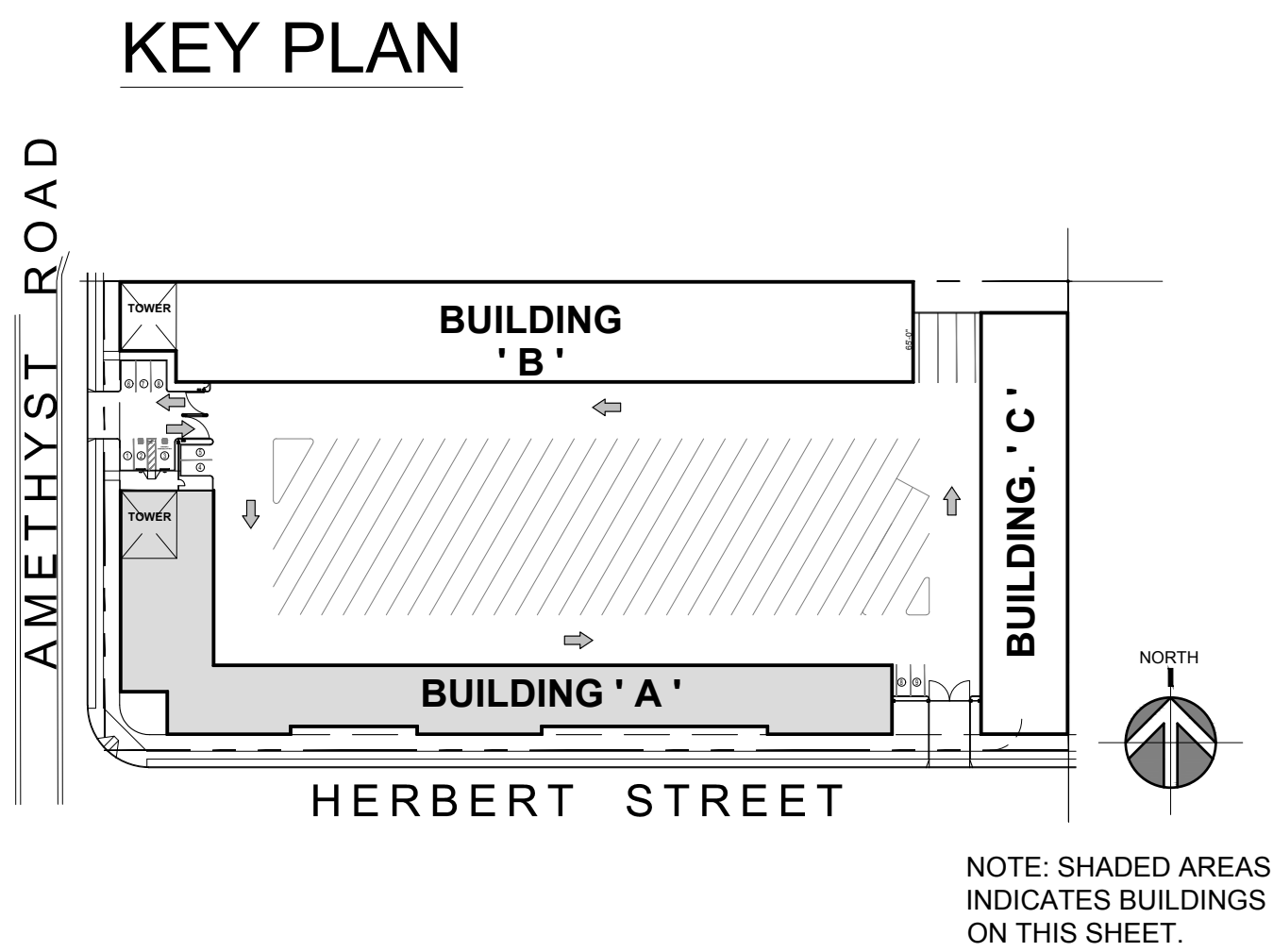
JORDAN
ARCHITECTS
131 CALLE IGLESIA, SUITE 100
SAN CLEMENTE, CA 92672
949.388.8090

KEY PLAN

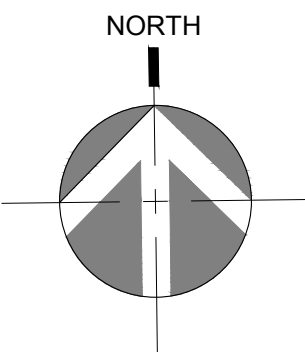




BLDG A FLOOR PLAN 1
1/16"=1'-0"



BLDG A SECOND FLOOR PLAN - RESIDENCE 2
1/16"=1'-0"



AMETHYST DRIVE SELF-STORAGE VICTORVILLE, CA

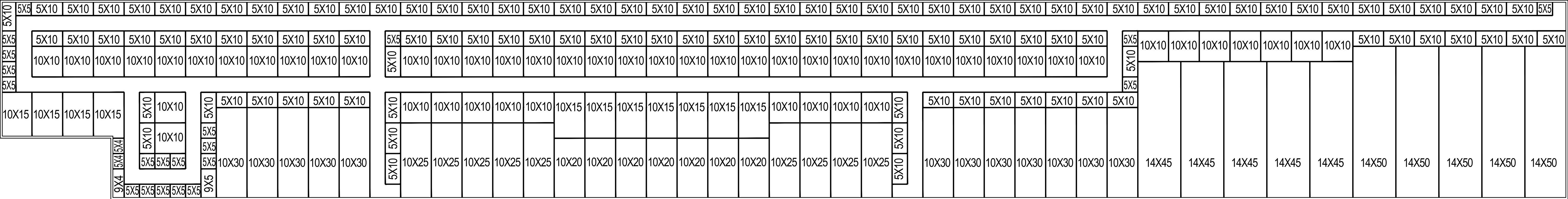
SCHEME 'D' A2.0 FLOOR PLAN

THIS DRAWING AND ITS CONTENTS ARE INSTRUMENTS OF SERVICE AND ARE THE COPYRIGHTED PROPERTY OF JORDAN ARCHITECTS, INC. THE USE IS EXPRESSLY INTENDED FOR THE PROJECT NOTED ABOVE AND MAY NOT BE REUSED OR REPRODUCED IN WHOLE OR IN PART WITHOUT THE WRITTEN PERMISSION OF JORDAN ARCHITECTS, INC. "COPYRIGHT" YEAR OF FIRST PUBLICATION 2020 JORDAN ARCHITECTS, INC.

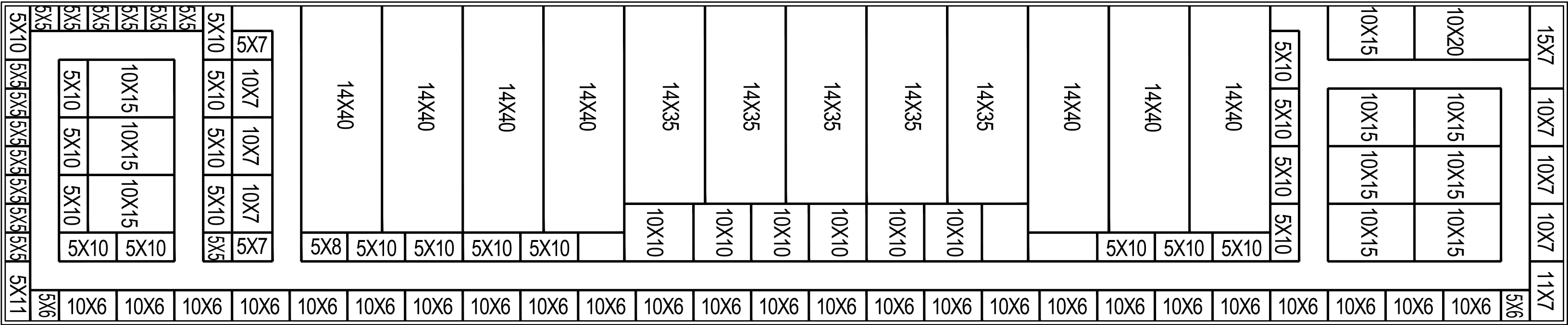
JOB NUMBER: 20-319
SCALE: 1/16"=1'-0"
DATE: 07/14/2020



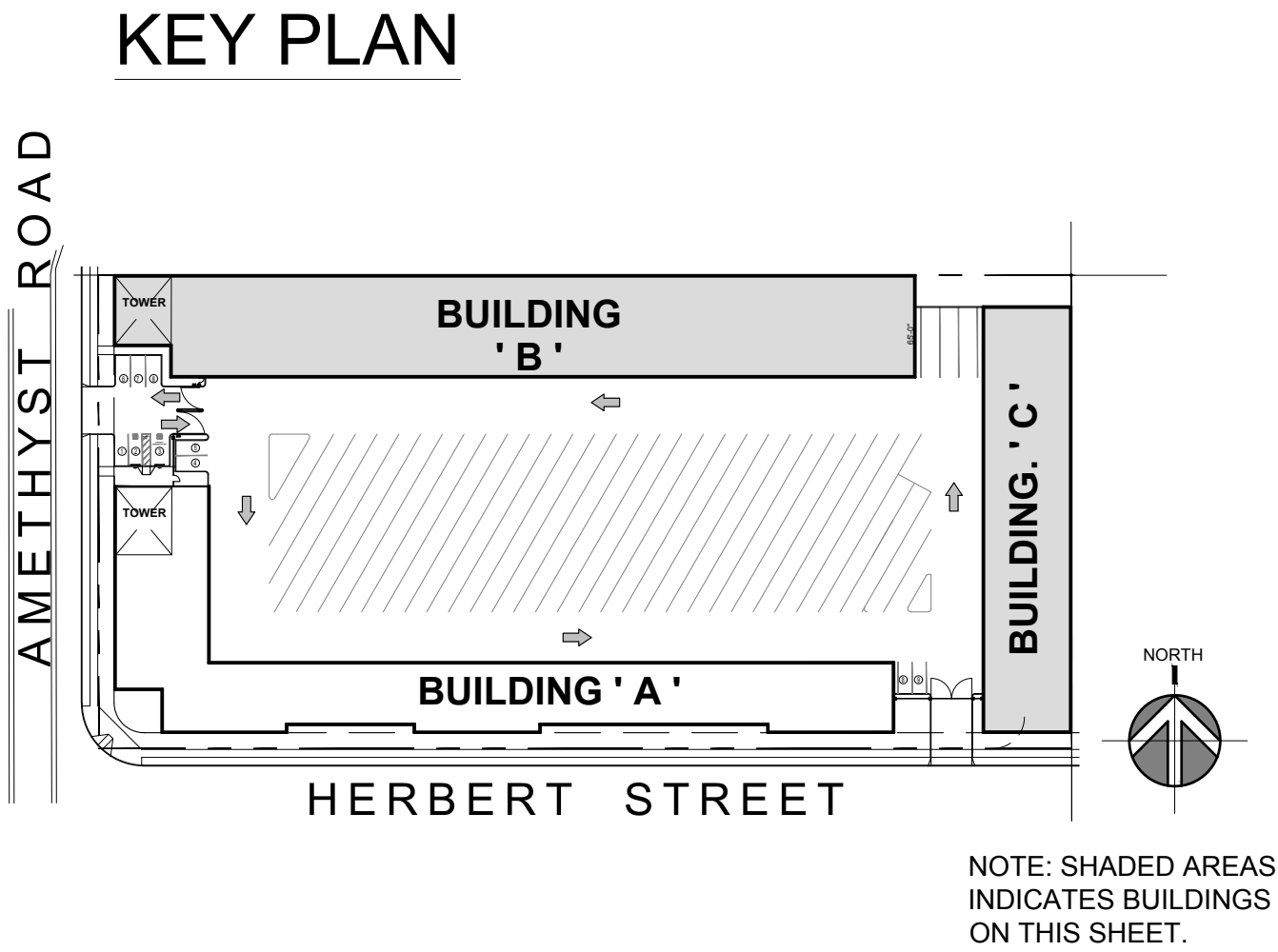
JORDAN
ARCHITECTS
131 CALLE IGLESIA, SUITE 100
SAN CLEMENTE, CA 92672
949.388.8090



BLDG B FLOOR PLAN 1
1/16"=1'-0"



BLDG C FLOOR PLAN 2
1/16"=1'-0"



AMETHYST DRIVE SELF-STORAGE VICTORVILLE, CA

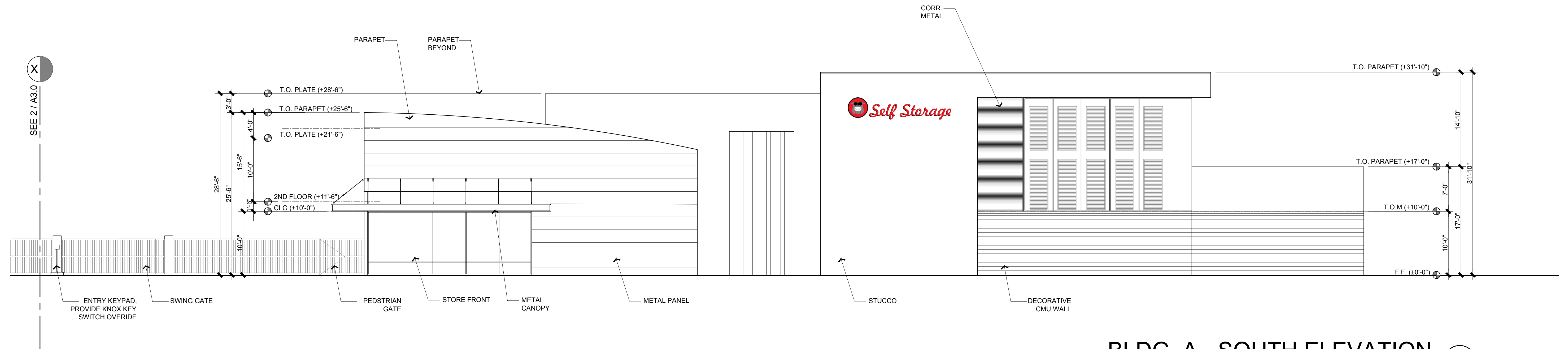
SCHEME 'D' A2.1 FLOOR PLAN

THIS DRAWING AND ITS CONTENTS ARE INSTRUMENTS OF SERVICE AND ARE THE COPYRIGHTED PROPERTY OF JORDAN ARCHITECTS, INC. THE USE IS EXPRESSLY INTENDED FOR THE PROJECT NOTED ABOVE AND MAY NOT BE REUSED OR REPRODUCED IN WHOLE OR IN PART WITHOUT THE WRITTEN PERMISSION OF JORDAN ARCHITECTS, INC. "COPYRIGHT" YEAR OF FIRST PUBLICATION 2020 JORDAN ARCHITECTS, INC.

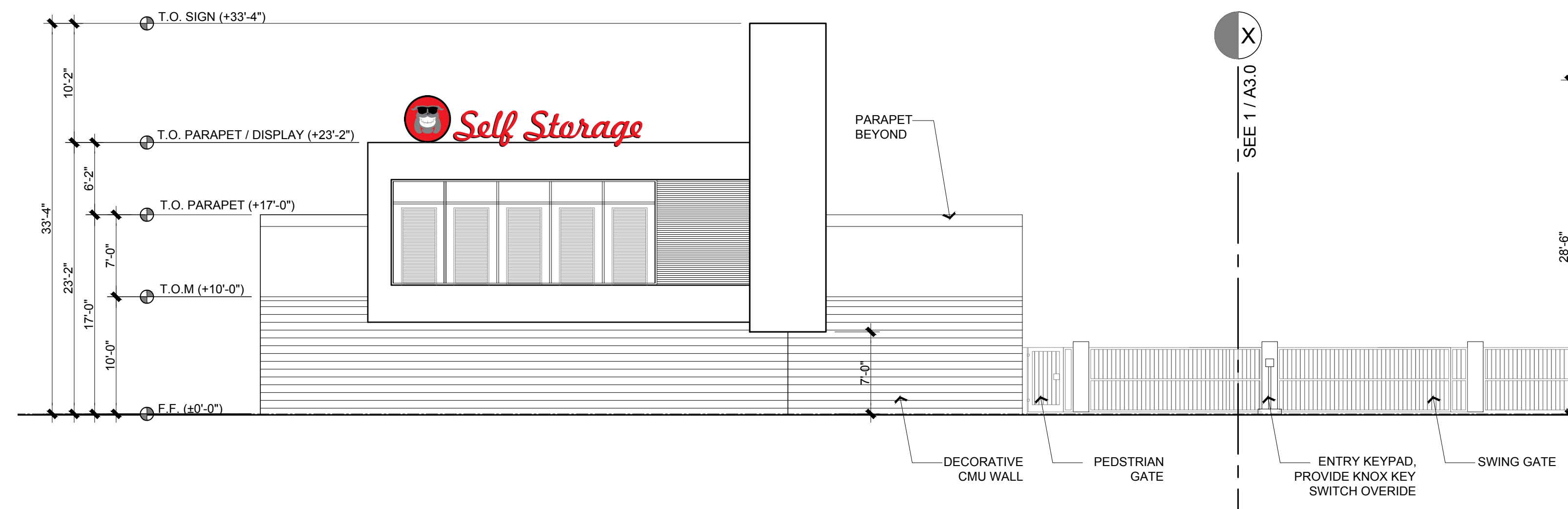
JOB NUMBER: 20-319
SCALE: 1/16"=1'-0"
DATE: 07/14/2020



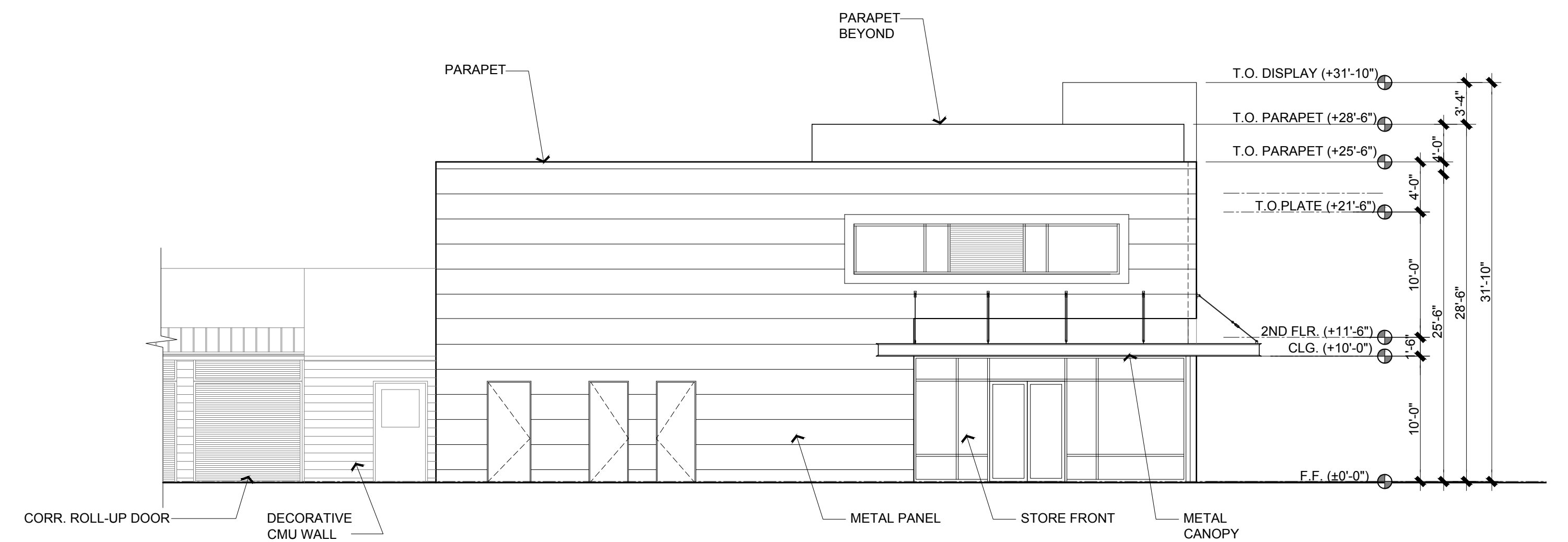
JORDAN
ARCHITECTS
131 CALLE IGLESIA, SUITE 100
SAN CLEMENTE, CA 92672
949.388.8090



BLDG. A - SOUTH ELEVATION 1
1/8" = 1'-0"



BLDG. B - WEST ELEVATION 2
1/8" = 1'-0"



BLDG. A - NORTH ELEVATION 3
1/8" = 1'-0"

AMETHYST DRIVE SELF-STORAGE VICTORVILLE, CA

SCHEME 'D' A3.0 ELEVATIONS

THIS DRAWING AND ITS CONTENTS ARE INSTRUMENTS OF SERVICE AND ARE THE COPYRIGHTED PROPERTY OF JORDAN ARCHITECTS, INC. THE USE IS EXPRESSLY INTENDED FOR THE PROJECT NOTED ABOVE AND MAY NOT BE REUSED OR REPRODUCED IN WHOLE OR IN PART WITHOUT THE WRITTEN PERMISSION OF JORDAN ARCHITECTS, INC. "COPYRIGHT" YEAR OF FIRST PUBLICATION 2020 JORDAN ARCHITECTS, INC.

JOB NUMBER: 20-319
SCALE: AS SHOWN
DATE: 07/14/2020




$$1/8'' = 1'-0''$$

1


$$\frac{1}{8}'' = 1'-0''$$

2


$$1/8'' = 1'-0''$$

3

SCHEME 'D' A3.1 ELEVATIONS

THIS DRAWING AND ITS CONTENTS ARE INSTRUMENTS OF SERVICE AND ARE THE COPYRIGHTED PROPERTY OF JORDAN ARCHITECTS, INC. THE USE IS EXPRESSLY INTENDED FOR THE PROJECT NOTED ABOVE AND MAY NOT BE REUSED OR REPRODUCED IN WHOLE OR IN PART WITHOUT THE WRITTEN PERMISSION OF JORDAN ARCHITECTS, INC. "COPYRIGHT" YEAR OF FIRST PUBLICATION 2020, JORDAN ARCHITECTS, INC.

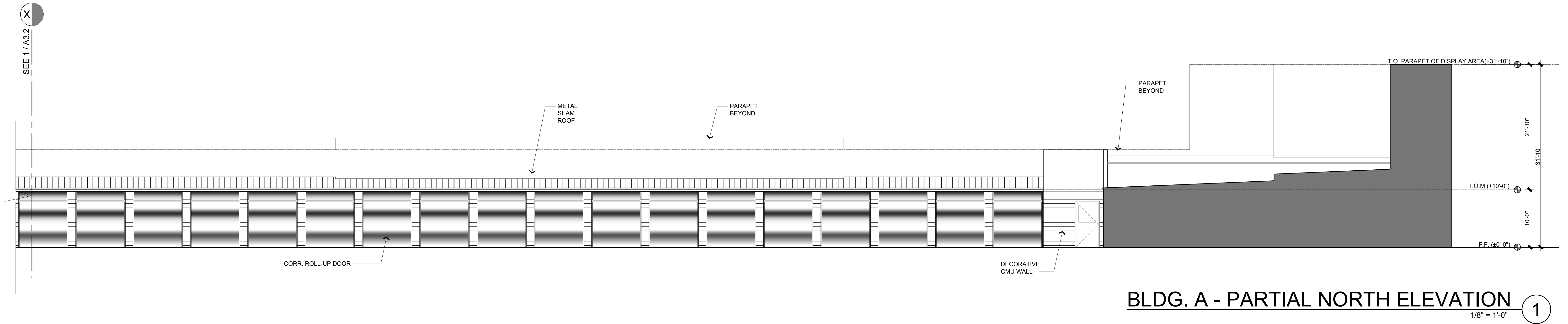
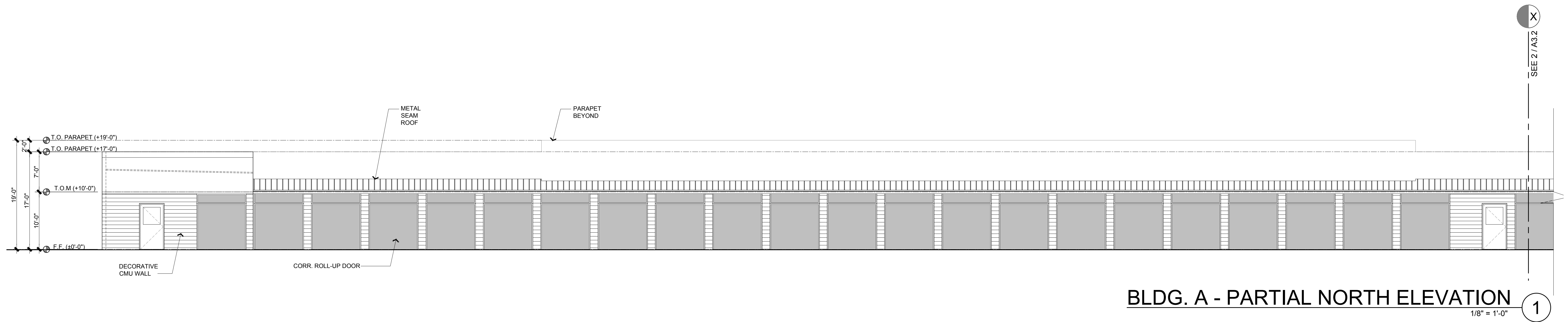
JOB NUMBER: 20-319
SCALE: AS SHOWN
DATE: 07/14/2020



ja

JORDAN
ARCHITECTS

131 CALLE IGLESIA, SUITE 100
SAN CLEMENTE, CA 92672
949.388.8090



AMETHYST DRIVE SELF-STORAGE

VICTORVILLE, CA

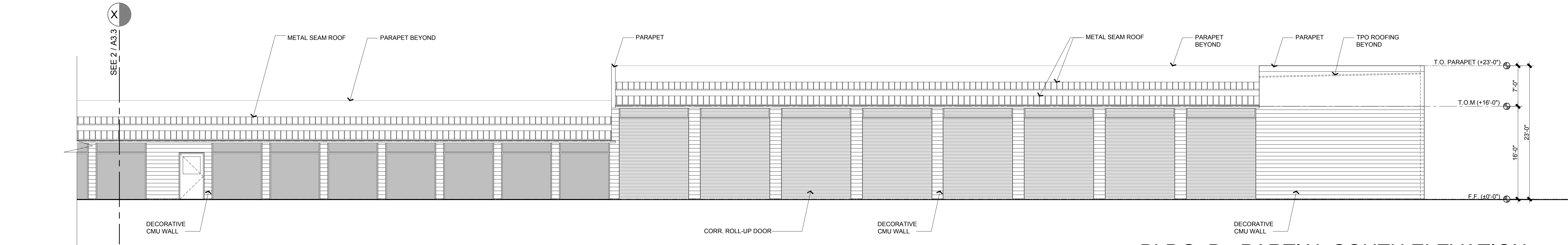
SCHEME 'D' A3.2

ELEVATIONS

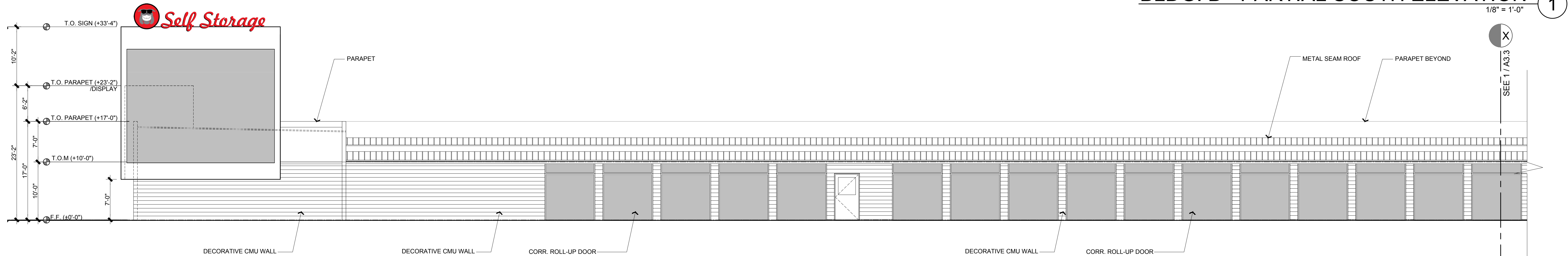
THIS DRAWING AND ITS CONTENTS ARE INSTRUMENTS OF SERVICE AND ARE THE COPYRIGHTED PROPERTY OF JORDAN ARCHITECTS, INC. THE USE IS EXPRESSLY INTENDED FOR THE PROJECT NOTED ABOVE AND MAY NOT BE REUSED OR REPRODUCED IN WHOLE OR IN PART WITHOUT THE WRITTEN PERMISSION OF JORDAN ARCHITECTS, INC. "COPYRIGHT" YEAR OF FIRST PUBLICATION 2020 JORDAN ARCHITECTS, INC.

JOB NUMBER: 20-319
SCALE: AS SHOWN
DATE: 07/14/2020

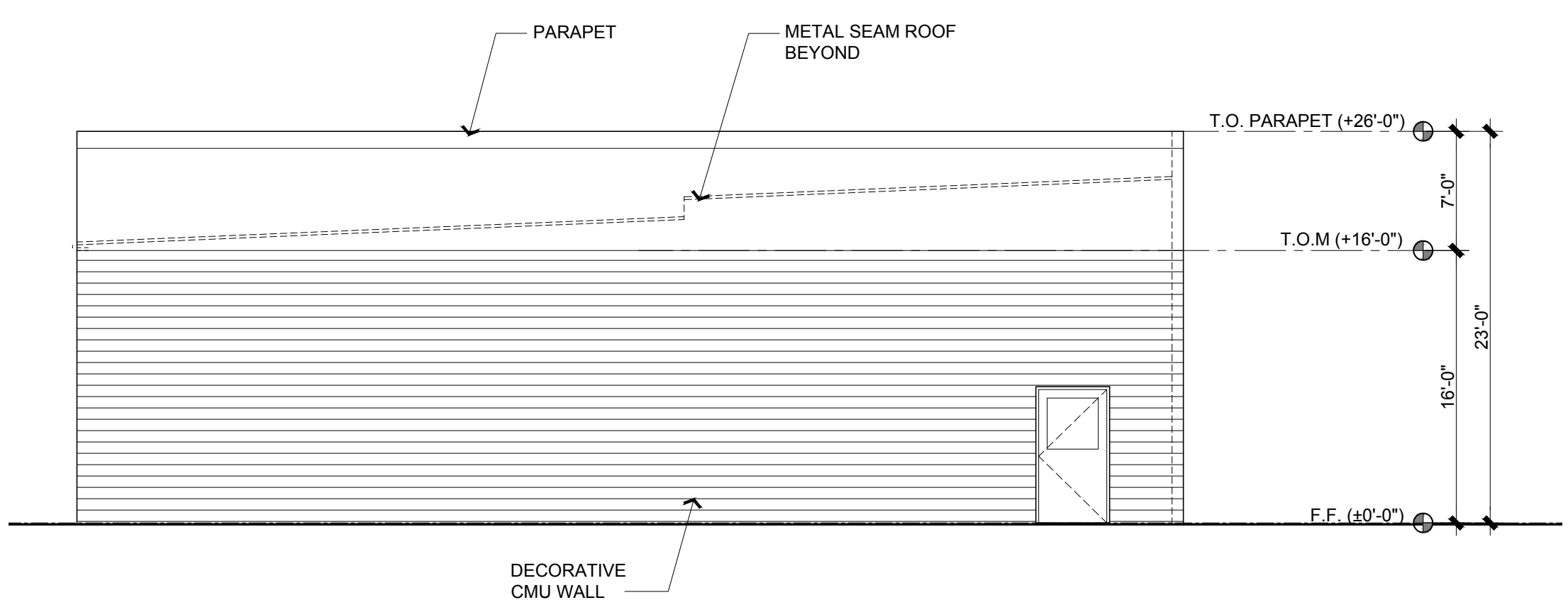




BLDG. B - PARTIAL SOUTH ELEVATION 1
1/8" = 1'-0"



BLDG. B - PARTIAL SOUTH ELEVATION 2
1/8" = 1'-0"



BLDG. B - EAST ELEVATION 3
1/8" = 1'-0"

AMETHYST DRIVE SELF-STORAGE

VICTORVILLE, CA

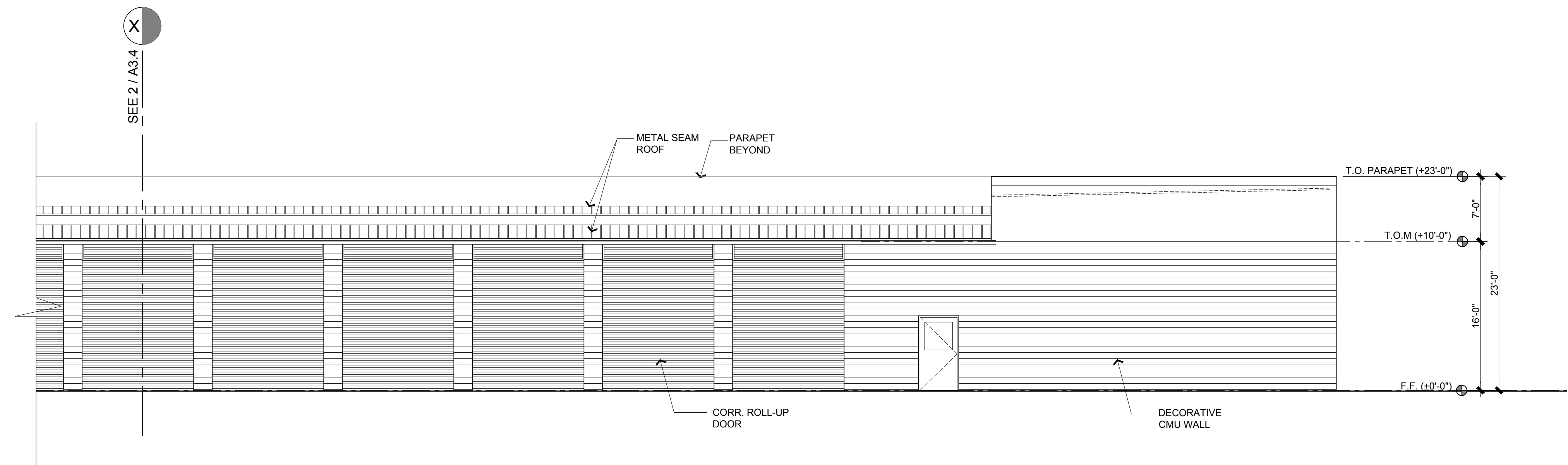
SCHEME 'D' A3.3

ELEVATIONS

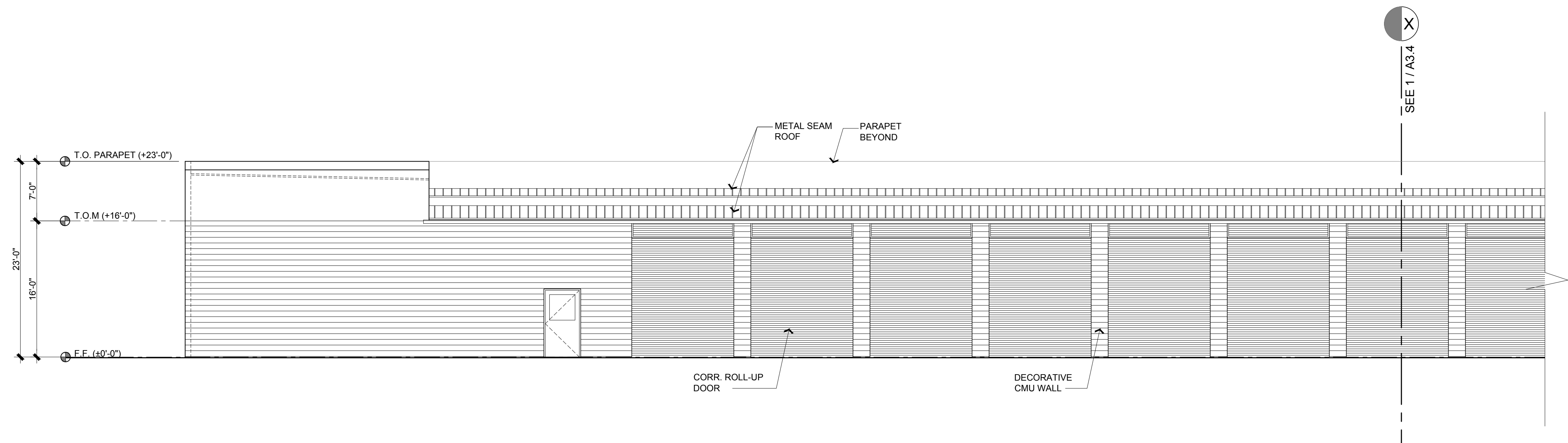
THIS DRAWING AND ITS CONTENTS ARE INSTRUMENTS OF SERVICE AND ARE THE COPYRIGHTED PROPERTY OF JORDAN ARCHITECTS, INC. THE USE IS EXPRESSLY INTENDED FOR THE PROJECT NOTED ABOVE AND MAY NOT BE REUSED OR REPRODUCED IN WHOLE OR IN PART WITHOUT THE WRITTEN PERMISSION OF JORDAN ARCHITECTS, INC. "COPYRIGHT" YEAR OF FIRST PUBLICATION 2020 JORDAN ARCHITECTS, INC.

JOB NUMBER: 20-319
SCALE: AS SHOWN
DATE: 07/14/2020

ja
JORDAN
ARCHITECTS
131 CALLE IGLESIA, SUITE 100
SAN CLEMENTE, CA 92672
949.388.8090



BLDG. C - PARTIAL WEST ELEVATION 1
1/8" = 1'-0"



BLDG. C - PARTIAL WEST ELEVATION 1
1/8" = 1'-0"

AMETHYST DRIVE SELF-STORAGE

VICTORVILLE, CA

SCHEME 'D' A3.4

ELEVATIONS

THIS DRAWING AND ITS CONTENTS ARE INSTRUMENTS OF SERVICE AND ARE THE COPYRIGHTED PROPERTY OF JORDAN ARCHITECTS, INC. THE USE IS EXPRESSLY INTENDED FOR THE PROJECT NOTED ABOVE AND MAY NOT BE REUSED OR REPRODUCED IN WHOLE OR IN PART WITHOUT THE WRITTEN PERMISSION OF JORDAN ARCHITECTS, INC. "COPYRIGHT" YEAR OF FIRST PUBLICATION 2020 JORDAN ARCHITECTS, INC.

JOB NUMBER: 20-319
SCALE: AS SHOWN
DATE: 07/14/2020

