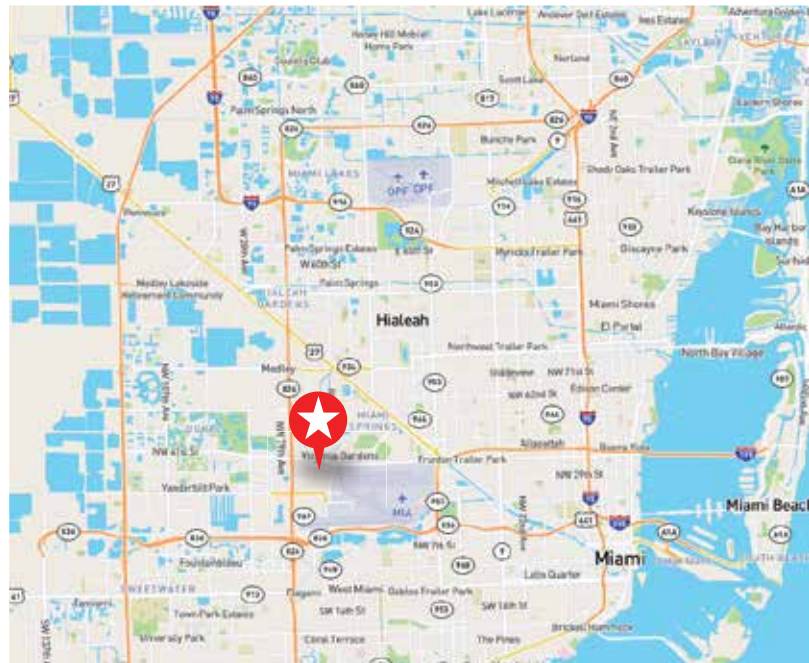


MILAM INDUSTRIAL CENTER +/- 3,150 Sq. Ft. Available for Lease 7319 NW 46TH Street, Miami, FL 33122



PROPERTY FEATURES

- ▶ +/- 3,150 Sq. Ft. Total
- ▶ +/- 300 Sq. Ft. Office
- ▶ +/- 2,800 Sq. Ft. Warehouse
- ▶ One (1) Street Level Loading Door
- ▶ 120/208 volts/ 1 phase
- ▶ 20' Clear Ceiling Height
- ▶ City Water & Sewer
- ▶ Close proximity to MIA & Palmetto Expy



FOR MORE INFORMATION:

Alexander Bernaldo, SIOR
President
Direct: 786.337.7877
Alex@AmericasCRE.com

Raymond Diaz, P.A., MSIRE
Commercial Associate
Direct: (786) 337-7883
Raymond@AmericasCRE.com

Yusef Canaan
Commercial Associate
Direct: (786) 337-7882
Yusef@AmericasCRE.com



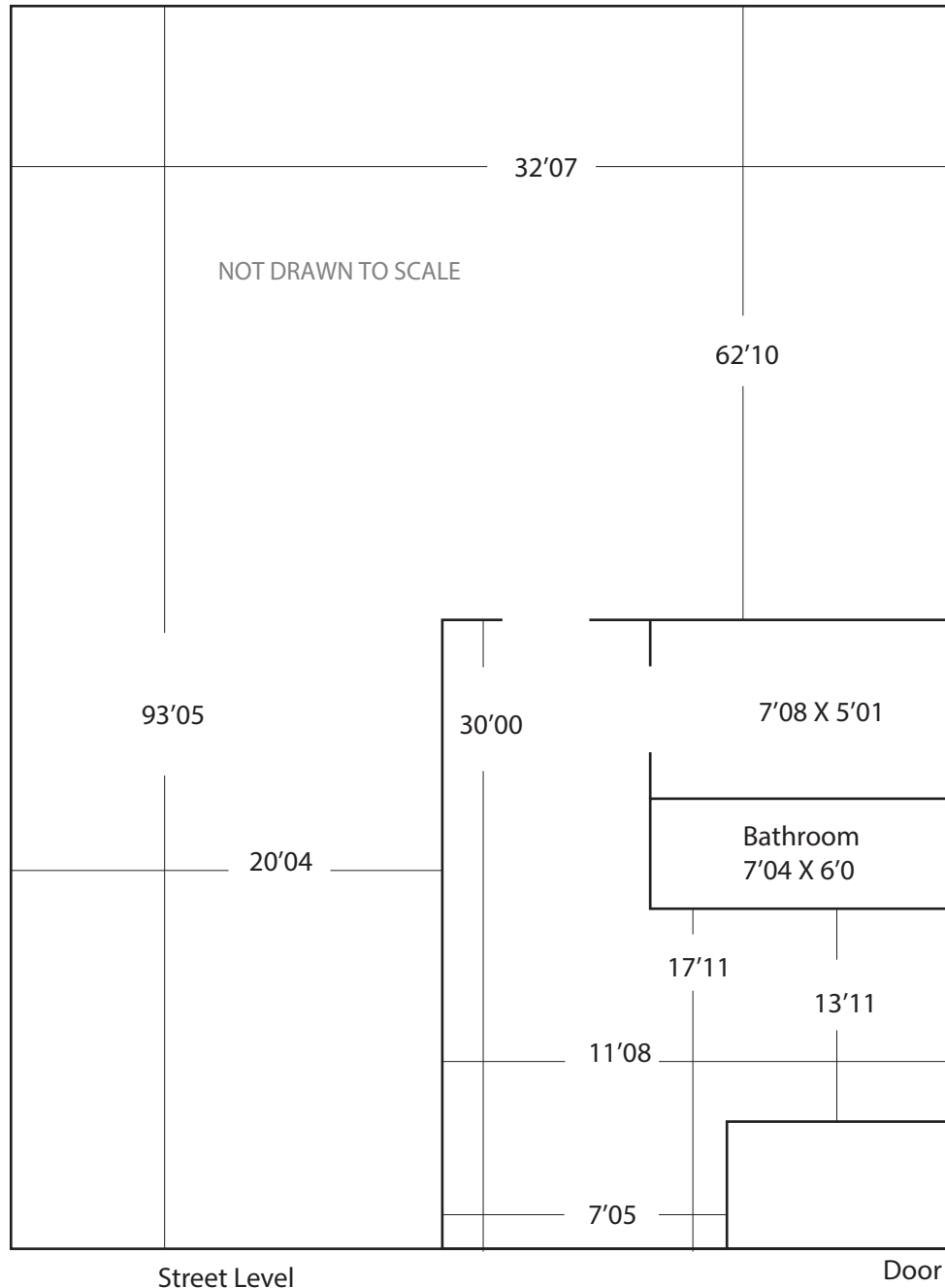
www.AmericasCRE.com | Licensed Real Estate Broker

10505 NW 112TH Ave, Suite 14, Medley, Florida 33178 | Tel. 305.883.1921 Fax. 305.883.1913

Copyright © 2025 Americas Commercial Real Estate. Any information herewith is obtained from sources we consider reliable. However, we are not responsible for misstatement of facts, errors, omissions, prior sale, withdrawal from market, modification of mortgage commitment, terms and conditions or change in price without prior notice.

MILAM INDUSTRIAL CENTER

+/- 3,150 Sq. Ft. Available for Lease
7319 NW 46TH Street, Miami, FL 33122



FOR MORE INFORMATION:

Alexander Bernaldo, SIOR
President
Direct: 786.337.7877
Alex@AmericasCRE.com

Raymond Diaz, P.A., MSIRE
Commercial Associate
Direct: (786) 337-7883
Raymond@AmericasCRE.com

Yusef Canaan
Commercial Associate
Direct: (786) 337-7882
Yusef@AmericasCRE.com



www.AmericasCRE.com | Licensed Real Estate Broker

10505 NW 112TH Ave, Suite 14, Medley, Florida 33178 | Tel. 305.883.1921 Fax. 305.883.1913

Copyright © 2025 Americas Commercial Real Estate. Any information herewith is obtained from sources we consider reliable. However, we are not responsible for misstatement of facts, errors, omissions, prior sale, withdrawal from market, modification of mortgage commitment, terms and conditions or change in price without prior notice.